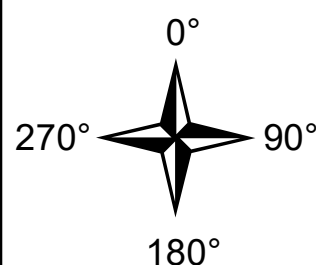
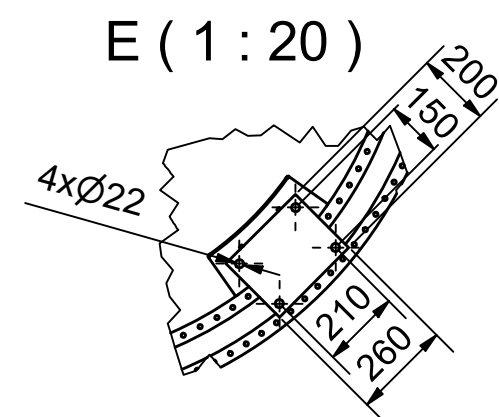
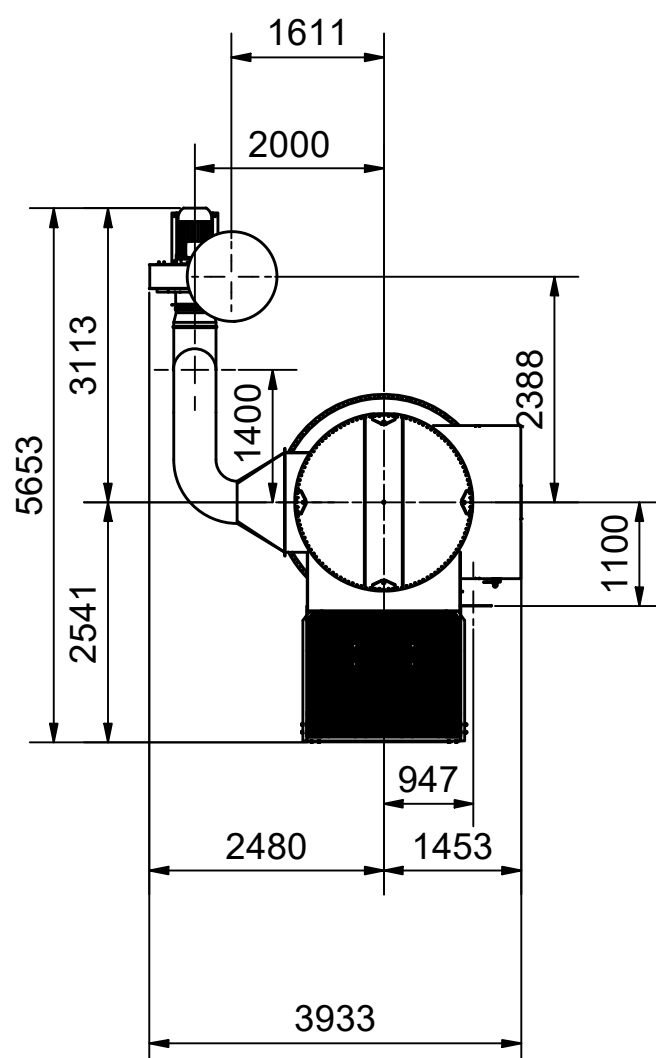


JM52/35-12, 4T3-R - 6% Vac.
TOMAL
Order No: S24337-010
Mach No : 9722

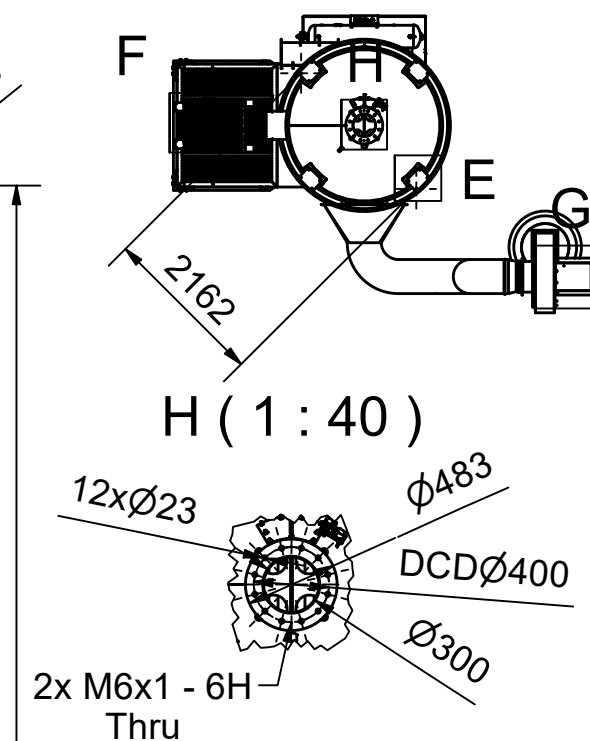
Counter flange for clean-air outlet: Yes
Counter flange for inlet: No
Counter flange for powder outlet: No
Filter delivery: Assembled
Execution: With Simatek signs
Machine exec.: Pres.sh.resist. (PSR)
Installation: Outdoor
ATEX zone classification filter outside: Zone 22
Material top section: S235JR/1.0038
Material product-side parts: S235JR/1.0038
Material compressed-air receiver: SPHL 275
Colour of filter: RAL9007/GIOOS20
Colour of comp.-air receiver: RAL7044/GLOSS40
Paint code: C4-M



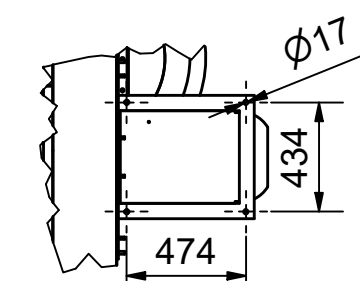
Tolerance +10/-5 mm per flange connection

D (1:100)

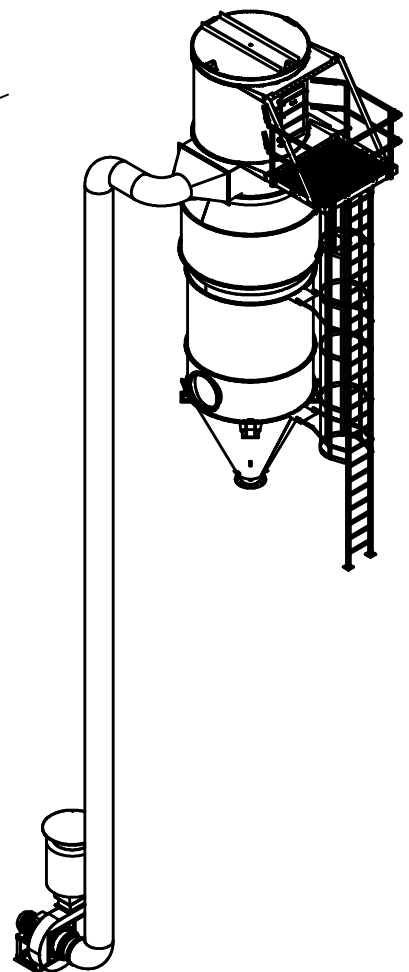
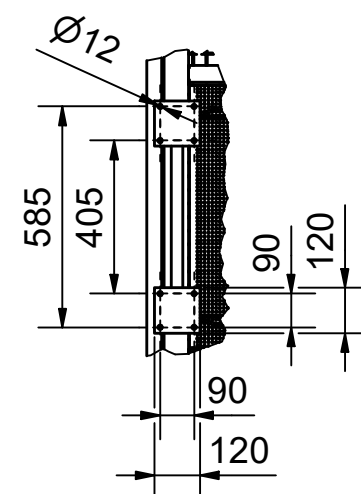
G (1 : 30)



H (1 : 40)



F (1 : 20)



21	1	426217	Weight of cages and bags for JM52 3,5m	236,8 kg	
20	1		Lindab inlet pipe ILTR Ø400	5,3 kg	
19	1		Lindab reduction RCLTR Ø400-Ø450	28,5 kg	
18	1		24-0001380 FI-N-712 N4A 180 RD0 Without silencer	65,4 kg	
17	1		Transition SLGPU 630-900-100	47,2 kg	
16	1		SLGPU 630--900-100	475 kg	
15	1		Rain cap Ø630	148,7 kg	
14	1	826872	Pipe Illustration.	2927,4 kg	
13	1	826952	Welding of flange AL300 to cone	13,2 kg	
12	1	132615	Safety Switch for cleaning door on cone	0,6 kg	
11	1	826782	Cone Ø2000 with base console with Hammer pl.	231,3 kg	90
10	1	470185	Lower lifting bracket Ø2000	7,3 kg	45
9	1	420762	Explosion Relief DN600/Ø2000	145,5 kg	270
8	1	420138	Filter housing ø2000x1500	244,7 kg	
7	1	425209	JM52 / Ø1800 with 300x800 "Right" 12-Inlet	654 kg	180
6	1	420226	Tube Sheet JM 52 Ø1800 Welded	95,2 kg	90
5	1	132421	Cleaning-air receiver ø300 JM52	67,6 kg	90
4	1	425328	Clean air chamber JM52 Ø1800 Assembly	209 kg	
3	1	821512	Removeble rain cover Ø1800	33,6 kg	90
2	1	826747	Service platform / Repos for Ø1800	491,8 kg	180
1	1	827135	Door Section Ø1800/H1500 - 6 % Vac.	456,8 kg	180
ITEM	QTY	PART No.	DESCRIPTION	MASS/PCE	ANGLE

Tolerance:
EN ISO 13920 Current version Tol. Class B

Weld classes:
EN 5817 Current version Quality Level C

SIMATEK
Filter Technology

Designed by:	KAD
--------------	-----

Date:	
-------	--

Material:

KAP
Checked by:

	Date:
--	-------

Weight:	N/A
---------	-----

SNO
Revised by:

	Date:

Weight: N/A

Tel. +45-58841500
www.simatek.com

SCSUP2	07-11-2024
SIMATEK Pulse Jet Filter	

TOMAL

JM52/35-12, 4T3-R - 6% Vac.

Projektion

Format:

Drawing number:

Rev.

This drawing is SIMATEK property.
Information contained herein may
not be disclosed, forwarded, altered,
or put into production without our
written permission.